

## Villa for sale in Calpe

### Reference

667939

### Operation

For sale

### Building Type

Resale

### Location

### Property Type

### Bedrooms / Bathrooms

3 / 2

### Size

175 m<sup>2</sup> Build / 830 m<sup>2</sup> Plot

### Price

795,000



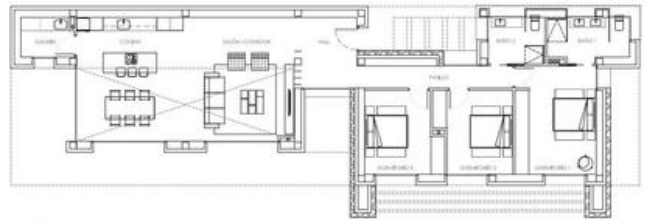
Welcome to a practical and modern villa currently under construction in Calpe. Situated on a completely flat plot, the property offers partial sea views and views of the Peñon de Ifach. With a single-floor layout, this residence is designed for convenience and accessibility.. . The villa comprises three bedrooms and two bathrooms, one of which is en-suite. The spacious living/dining room provides a comfortable space for everyday living. The kitchen is fully fitted, and a utility room adds to the practicality of the layout.. . Step outside onto a large terrace that accompanies an extra-long pool, providing a space for outdoor activities and relaxation. The south orientation ensures plenty of sunlight. The property is located on a dead-end street, offering privacy, yet it has excellent access to main roads for easy connectivity.. . In summary, this under-construction villa in Calpe is a functional and modern living space, perfect for those who value simplicity, convenience, and contemporary design..

### More information

contact@bullmannproperties.com - [www.bullmannproperties.com](http://www.bullmannproperties.com)







PLANTA BAJA

SUPERFICIES ÚTILES PLANTA BAJA

Descripción	Superficie
Salón - Comedor - Cocina	34,80 m <sup>2</sup>
HAB	7,30 m <sup>2</sup>
W.C.	2,00 m <sup>2</sup>
Comodoro I	15,30 m <sup>2</sup> (10,00 m <sup>2</sup> )
Baños I	7,00 m <sup>2</sup>
Comodoro II	11,00 m <sup>2</sup> (10,00 m <sup>2</sup> )
Baños II	6,30 m <sup>2</sup>
Comodoro III	11,00 m <sup>2</sup> (10,00 m <sup>2</sup> )
W.C. exterior - W.C.	10,00 m <sup>2</sup>
Calefacción	6,20 m <sup>2</sup>
Terraza Loggia	20,00 m <sup>2</sup>

RESUMEN SUPERFICIES CONSTRUIDAS

Descripción	Superficie	Superficie
Planta Baja	104,00 m <sup>2</sup>	104,00 m <sup>2</sup>
Área Loggia	20,00 m <sup>2</sup>	20,00 m <sup>2</sup>
TOTAL SUPERFICIES CONSTRUIDAS	124,00 m <sup>2</sup>	124,00 m <sup>2</sup>
Área	124,00 m <sup>2</sup>	124,00 m <sup>2</sup>
Terraza Loggia	20,00 m <sup>2</sup>	20,00 m <sup>2</sup>

Esc. 1:50 (Planta Baja) - Esc. 1:50 (Planta Baja) - Esc. 1:50 (Planta Baja)