

## Villa for sale in Moraira

### Reference

630188

### Operation

For sale

### Building Type

Resale

### Location

### Property Type

### Bedrooms / Bathrooms

4 / 4

### Size

699 m<sup>2</sup> Build / 13500 m<sup>2</sup> Plot

### Price

1,695,000



. . This Mediterranean-style villa has 3 floors that are connected with an internal staircase. It has a spacious open-plan living-dining-kitchen area.. . The kitchen is fully equipped and has a cooking island. It has 4 bathrooms and a guest toilet. The property also has a basement and utility room.. . It has air conditioning throughout the house (conduct) and central heating. Automatic entrance gate with separate pedestrian entrance and intercom.. . On the same level as the main house is the pool and a large terrace..

### More information

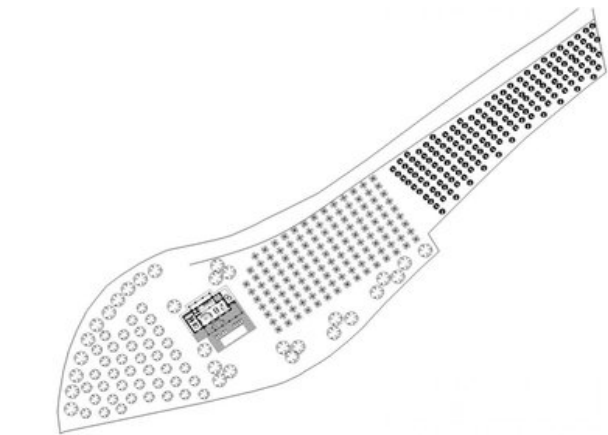
contact@bullmannproperties.com - www.bullmannproperties.com



Superficie	Características
Puerta principal	148,50 m <sup>2</sup>
Alameda	222,00 m <sup>2</sup>
Puerta 1	25,00 m <sup>2</sup>
Puerta 2	77,07 m <sup>2</sup>
Alameda	147,00 m <sup>2</sup>
Alameda	48,00 m <sup>2</sup>
Alameda	48,00 m <sup>2</sup>
Alameda	97,00 m <sup>2</sup>
Puerta exterior	81,00 m <sup>2</sup>
Alameda	72,00 m <sup>2</sup>



PLANTA ALTA

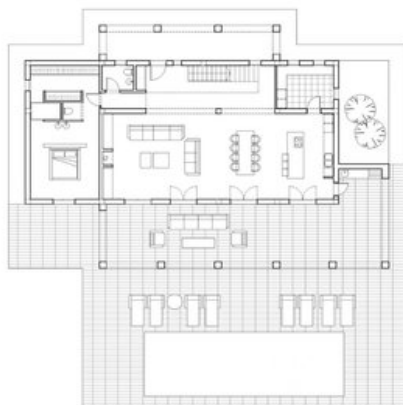


Superficie	Características
Puerta principal	148,50 m <sup>2</sup>
Alameda	222,00 m <sup>2</sup>
Puerta 1	25,00 m <sup>2</sup>
Puerta 2	77,07 m <sup>2</sup>
Alameda	147,00 m <sup>2</sup>
Alameda	48,00 m <sup>2</sup>
Alameda	48,00 m <sup>2</sup>
Alameda	97,00 m <sup>2</sup>
Puerta exterior	81,00 m <sup>2</sup>
Alameda	72,00 m <sup>2</sup>



PLANTA BAJA

Superficie	Características
Puerta principal	148,50 m <sup>2</sup>
Alameda	222,00 m <sup>2</sup>
Puerta 1	25,00 m <sup>2</sup>
Puerta 2	77,07 m <sup>2</sup>
Alameda	147,00 m <sup>2</sup>
Alameda	48,00 m <sup>2</sup>
Alameda	48,00 m <sup>2</sup>
Alameda	97,00 m <sup>2</sup>
Puerta exterior	81,00 m <sup>2</sup>
Alameda	72,00 m <sup>2</sup>



PLANTA BAJA